

FREEHOLD



House - Terraced

# 19 SOUTH STREET, STANSTEAD ABBOTTS, WARE, SG12 8AJ

Guide Price

## £430,000

### FEATURES

- Chain Free
- Walking Distance to St Margarets Station Serving London Liverpool St. (0.2 Miles)
- Loft Room Accessed Via Bedroom 1
- Stylish Family Bathroom
- Attractive Two Bedroom Period Home
- West Facing Rear Garden
- Modern Fitted Kitchen
- Entrance Porch



# South Street Ware SG12 8AJ

The property welcomes you via an entrance porch, leading into a spacious living/dining room, ideal for both relaxing and entertaining. To the rear is a modern fitted kitchen with access to the west-facing rear garden.

To the first floor are two generous double bedrooms, with bedroom one benefiting from access to a versatile loft room, ideal as a home office, bedroom or additional storage. A stylish family bathroom completes the first floor.

Situated in the highly desirable Stanstead Abbots, the property is just a short walk from the bustling High Street, offering an excellent selection of shops, cafés, pubs and restaurants, while beautiful countryside walks and the Lea Valley are close by.

For commuters, St Margarets train station is within easy walking distance, providing direct links into London Liverpool Street, whilst excellent access to the A10, A414 and M25 ensures convenient travel to surrounding towns and beyond.

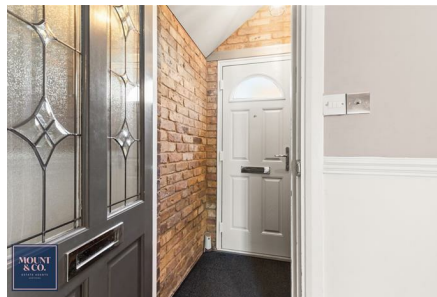
The property is offered with no onward chain and is a fantastic opportunity to acquire a charming home in a highly sought-after location. Early viewing is highly recommended.



MOUNT & CO | 2 MARKET PLACE, HERTFORD, HERTFORDSHIRE, SG14 1DF



MOUNT & CO | 2 MARKET PLACE, HERTFORD, HERTFORDSHIRE, SG14 1DF



MOUNT & CO | 2 MARKET PLACE, HERTFORD, HERTFORDSHIRE, SG14 1DF

Call us on

01992 937 011

hello@mountandco.co.uk

https://www.mountandco.co.uk/

Council Tax Band

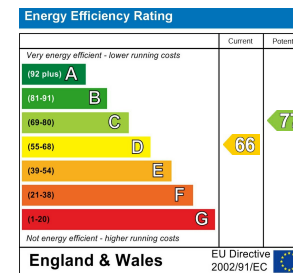
C



Total Area: approx. 83.7 m<sup>2</sup> ... 900 ft<sup>2</sup>

THE FLOORPLAN IS FOR ILLUSTRATIVE PURPOSES ONLY AND IS NOT TO SCALE.  
Measurements and features are approximate and may differ from the actual property. Verify all details independently; no liability is accepted for errors or omissions.

Property marketing provided by www.fotomarketing.co.uk



Agents Note: Whilst every care has been taken to prepare these particulars, they are for guidance purposes only. All measurements are approximate and are for general guidance purposes only and whilst every care has been taken to ensure their accuracy, they should not be relied upon and potential buyers are advised to recheck the measurements.